

# JAPAN 桜

Cherry Blossom Cruise & Tour | Tokyo to Kobe

NEW WEST  
TRAVEL & CRUISES

Greenland  
GARDEN CENTRE

AZAMARA  
CRUISES

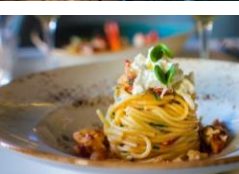
## Japan Cherry Blossom Tour | March 23<sup>rd</sup> - April 5<sup>th</sup>

Join Rod and Deb from Greenland Garden Centre on a 13-day cruise & tour. Discover the enchanting beauty and rich culture of Japan onboard the intimate Azamara Pursuit. With extended stays in several ports, Azamara's signature destination immersion allows you to experience Japan's temples, castles, cuisine, and traditions at a relaxed, unhurried pace—perfect for the discerning traveler seeking depth over speed.

### Newwest Travel - Greenland Cruise Package Includes:

- ✓ Round-trip international airfare with WestJet
- ✓ 1 pre-cruise hotel night in Tokyo
- ✓ 10-day voyage on the **5-star Azamara Pursuit**
- ✓ 2 post-nights hotel in Kyoto
- ✓ Welcome cocktail reception with the group aboard the ship
- ✓ 8 spectacular ports of call in Japan & South Korea
- ✓ Variety of Dining Venues & 24-hour Room Service
- ✓ Beer, Wine, and Spirits All Day & Night
- ✓ Choice of Luxurious Stateroom
- ✓ Onboard shows, music, guest speakers, fitness centre & classes, pool & whirlpools, AzAmazing Evenings, boutique shopping\*, Sanctum Spa + Vitality Centre\*
- ✓ Round-trip airport and cruise port transfers
- ✓ All taxes, port fees and shipboard gratuities
- ✓ **Escorted by Rod and Deb from Greenland Garden Centre**

\*Extra charges may apply



### PACKAGE PRICING IN CANADIAN DOLLARS

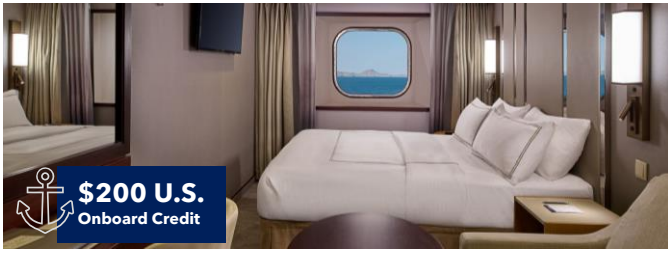
Inside Stateroom - Starting at:

**\$13,625** per person

based on double occupancy. Taxes included. (Category 12)



\$200 U.S.  
Onboard Credit

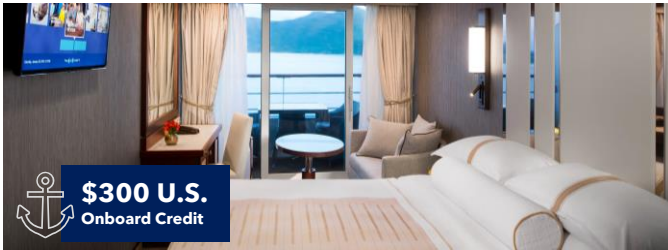


 **\$200 U.S.**  
Onboard Credit



**Oceanview Stateroom**  
Starting at:

**\$14,435** per person  
based on double occupancy.  
Taxes included. (Category 06 & 08)



 **\$300 U.S.**  
Onboard Credit



**Veranda Stateroom**  
Starting at:

**\$15,035** per person  
based on double occupancy.  
Taxes included. (Category V2 - V3)



 **\$300 U.S.**  
Onboard Credit



**Veranda Plus Stateroom**  
Starting at:

**\$15,445** per person  
based on double occupancy.  
Taxes included. (Category P3)



 **\$450 U.S.**  
Onboard Credit



**Continent Suite**  
Starting at:

**\$18,465** per person  
based on double occupancy.  
Taxes included. (Category N1- N2)

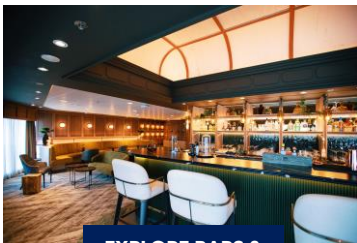
# Azamara Pursuit

702 Guests | 408 Crew Members | Year Refurbished: 2024

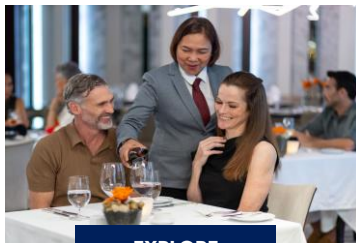
The Azamara Pursuit is a luxury cruise ship designed for "country-club casual" voyages, featuring immersive destination-focused itineraries. Refurbished in 2024, the ship offers seven dining options, a pool, spa, and boutique hotel atmosphere. Staterooms include Club Continent Suites, Spa Suites, and standard veranda/interior options with 24-hour room service.



**EXPLORE LIFE ONBOARD PURSUIT**



**EXPLORE BARS & LOUNGES**



**EXPLORE DINING**



**EXPLORE ENTERTAINMENT**



**EXPLORE SPA & FITNESS**

### ALWAYS INCLUDED

Variety of Dining Venues & 24-hour Room Service  
 Beer, Wine, and Spirits All Day & Night  
 Signature AzAmazing Evenings  
 Unlimited Self-Service Laundry  
 Onboard Gratuities

### ALWAYS EXPECTED

Overnights & Extended Destination Days  
 Unique & Iconic Destinations  
 No Hassle, No Crowds  
 Warm & Attentive Service



## Cruise & Tour Itinerary

Day	Port	Arrive	Depart	Day	Port	Arrive	Depart
Mar 24	Arrive Tokyo	Hotel		Mar 31	Busan, South Korea	8 AM	10 PM
Mar 25	Tokyo, Japan	<b>Embark</b>		Apr 1	Kitakyushu, Japan	8 AM	6PM
Mar 26	Tokyo, Japan		7 PM	Apr 2	Kochi, Japan	8 AM	6 PM
Mar 27	Mt Fuji (Shimizu), Japan	8 AM	8 PM	Apr 3	Kobe & Kyoto, Japan	<b>Disembark 6 AM</b>	
Mar 28	At Sea			Apr 4	Kyoto, Japan	Hotel	
Mar 29	Hiroshima, Japan	8 AM	10 PM	Apr 5	Depart back to Canada	Hotel	
Mar 30	Beppu, Japan	8:30 AM	5 PM				

**BOOK BY JUNE 30<sup>th</sup> TO SAVE \$1,000 PER PERSON OFF THE LISTED RATES!**

Tour prices are in Canadian dollars and subject to change without notice. Prices are per person based on room occupancy and are non-refundable. Some services included in your accommodation may not be available as advertised. Flight upgrades and extended stays may be available upon request. Cruise itinerary is subject to change at the discretion of Azamara. On Board Credit is per stateroom. **Note:** The timing of the cherry blossom season may vary each year depending on weather conditions and whether spring arrives early or late. [Read more about Newwest Travel's Terms & Conditions and Travel Disclaimers](#)



