

JAPAN 桜

Cherry Blossom Cruise & Tour | Tokyo to Kobe



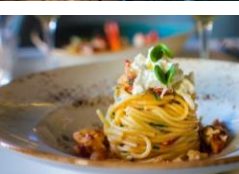
Japan Cherry Blossom Tour | March 23rd - April 5th

Join Rod and Deb from Greenland Garden Centre on a 13-day cruise & tour. Discover the enchanting beauty and rich culture of Japan onboard the intimate Azamara Pursuit. With extended stays in several ports, Azamara's signature destination immersion allows you to experience Japan's temples, castles, cuisine, and traditions at a relaxed, unhurried pace—perfect for the discerning traveler seeking depth over speed.

Newwest Travel - Greenland Cruise Package Includes:

- ✓ Round-trip international airfare with WestJet
- ✓ 1 pre-cruise hotel night in Tokyo
- ✓ 10-day voyage on the **5-star Azamara Pursuit**
- ✓ 2 post-nights hotel in Kobe
- ✓ Welcome cocktail reception with the group aboard the ship
- ✓ 8 spectacular ports of call in Japan & South Korea
- ✓ Variety of Dining Venues & 24-hour Room Service
- ✓ Beer, Wine, and Spirits All Day & Night
- ✓ Choice of Luxurious Stateroom
- ✓ Onboard shows, music, guest speakers, fitness centre & classes, pool & whirlpools, AzAmazing Evenings, boutique shopping*, Sanctum Spa + Vitality Centre*
- ✓ Round-trip airport and cruise port transfers
- ✓ All taxes, port fees and shipboard gratuities
- ✓ **Escorted by Rod and Deb from Greenland Garden Centre**

*Extra charges may apply



PACKAGE PRICING IN CANADIAN DOLLARS

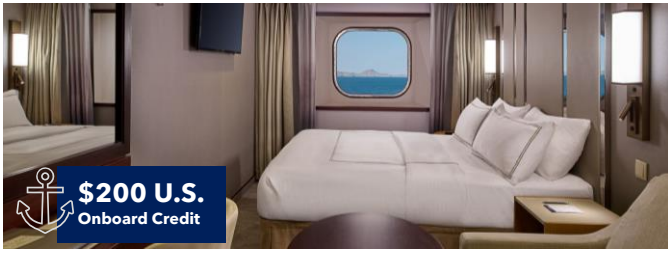
Inside Stateroom - Starting at:

\$12,925 per person

based on double occupancy. Taxes included. (Category 12)



\$200 U.S.
Onboard Credit

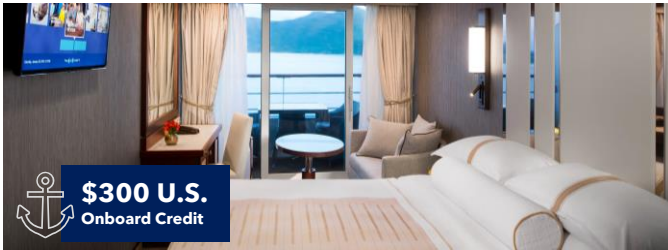


 **\$200 U.S.**
Onboard Credit



Oceanview Stateroom
Starting at:

\$13,735 per person
based on double occupancy.
Taxes included. (Category 06 & 08)



 **\$300 U.S.**
Onboard Credit



Veranda Stateroom
Starting at:

\$14,335 per person
based on double occupancy.
Taxes included. (Category V2 - V3)



 **\$300 U.S.**
Onboard Credit



Veranda Plus Stateroom
Starting at:

\$14,745 per person
based on double occupancy.
Taxes included. (Category P3)



 **\$450 U.S.**
Onboard Credit



Continent Suite
Starting at:

\$17,765 per person
based on double occupancy.
Taxes included. (Category N1- N2)

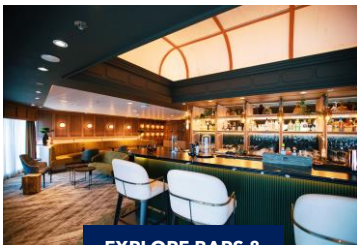
Azamara Pursuit

702 Guests | 408 Crew Members | Year Refurbished: 2024

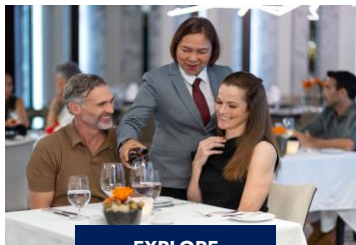
The Azamara Pursuit is a luxury cruise ship designed for "country-club casual" voyages, featuring immersive destination-focused itineraries. Refurbished in 2024, the ship offers seven dining options, a pool, spa, and boutique hotel atmosphere. Staterooms include Club Continent Suites, Spa Suites, and standard veranda/interior options with 24-hour room service.



EXPLORE LIFE ONBOARD PURSUIT



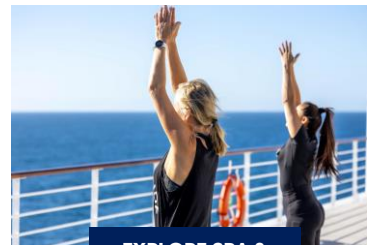
EXPLORE BARS & LOUNGES



EXPLORE DINING



EXPLORE ENTERTAINMENT



EXPLORE SPA & FITNESS

ALWAYS INCLUDED

Variety of Dining Venues & 24-hour Room Service
Beer, Wine, and Spirits All Day & Night
Signature AzAmazing Evenings
Unlimited Self-Service Laundry
Onboard Gratuities

ALWAYS EXPECTED

Overnights & Extended Destination Days
Unique & Iconic Destinations
No Hassle, No Crowds
Warm & Attentive Service

ALWAYS
AZAMARA

Cruise & Tour Itinerary

Day	Port	Arrive	Depart	Day	Port	Arrive	Depart
Mar 24	Arrive Tokyo	Hotel		Mar 31	Busan, South Korea	8 AM	10 PM
Mar 25	Tokyo, Japan	Embark		Apr 1	Kitakyushu, Japan	8 AM	6PM
Mar 26	Tokyo, Japan		7 PM	Apr 2	Kochi, Japan	8 AM	6 PM
Mar 27	Mt Fuji (Shimizu), Japan	8 AM	8 PM	Apr 3	Kobe, Japan	Disembark 6 AM	
Mar 28	At Sea			Apr 4	Kobe, Japan	Hotel	
Mar 29	Hiroshima, Japan	8 AM	10 PM	Apr 5	Depart back to Canada	Hotel	
Mar 30	Beppu, Japan	8:30 AM	5 PM				

BOOK BY JUNE 30th TO SAVE \$1,000 PER PERSON OFF THE LISTED RATES!

**FOR MORE INFO AND RESERVATIONS PLEASE CONTACT NEWWEST TRAVEL
1 (800) 661-7281 | (780) 432-7446 | info@newwesttravel.com | newwesttravel.com**

Tour prices are in Canadian dollars and subject to change without notice. Prices are per person based on room occupancy and are non-refundable. Some services included in your accommodation may not be available as advertised. Flight upgrades and extended stays may be available upon request. Cruise itinerary is subject to change at the discretion of Azamara. On Board Credit is per stateroom. [Read more about Newwest Travel's Terms & Conditions and Travel Disclaimers.](#)

